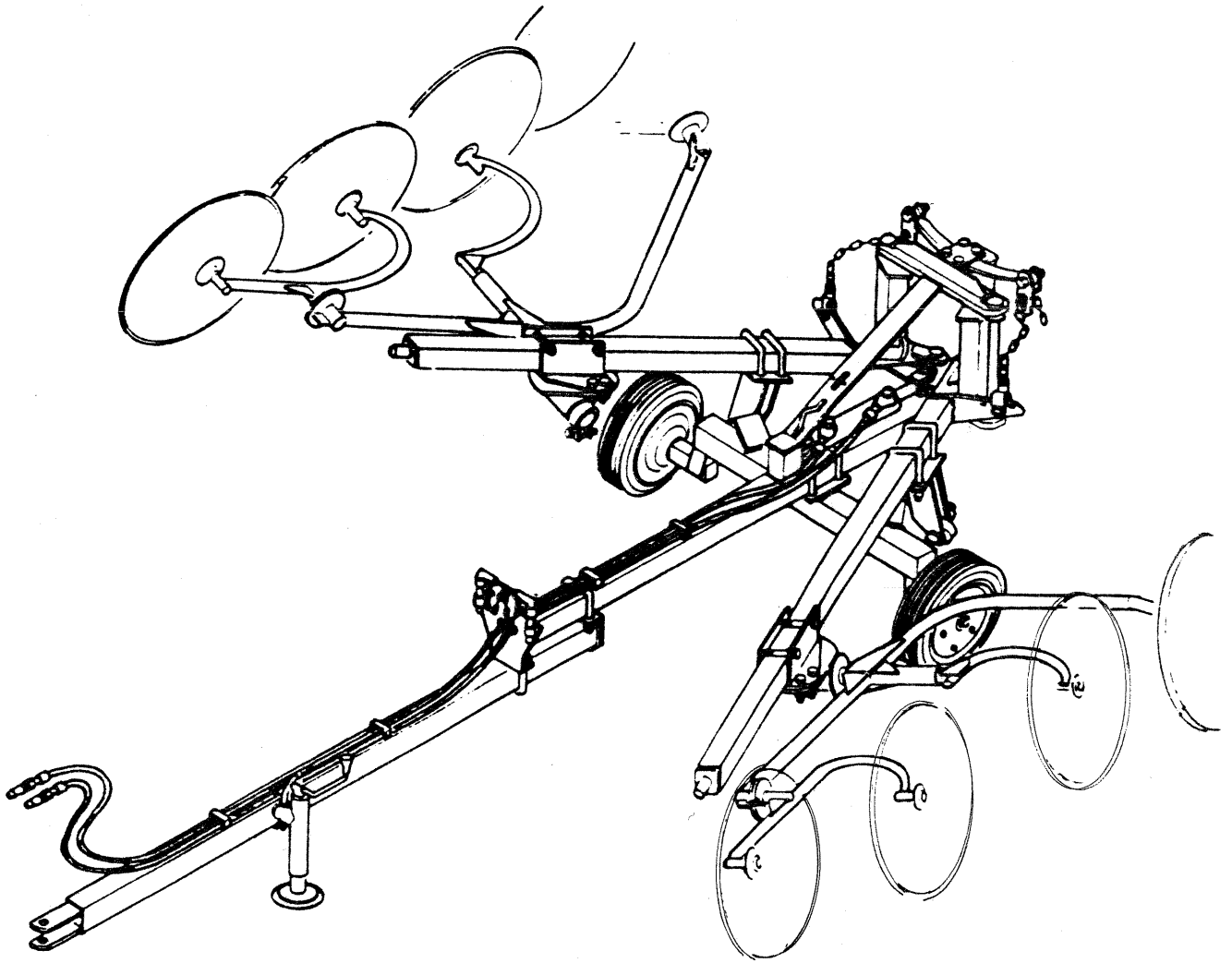




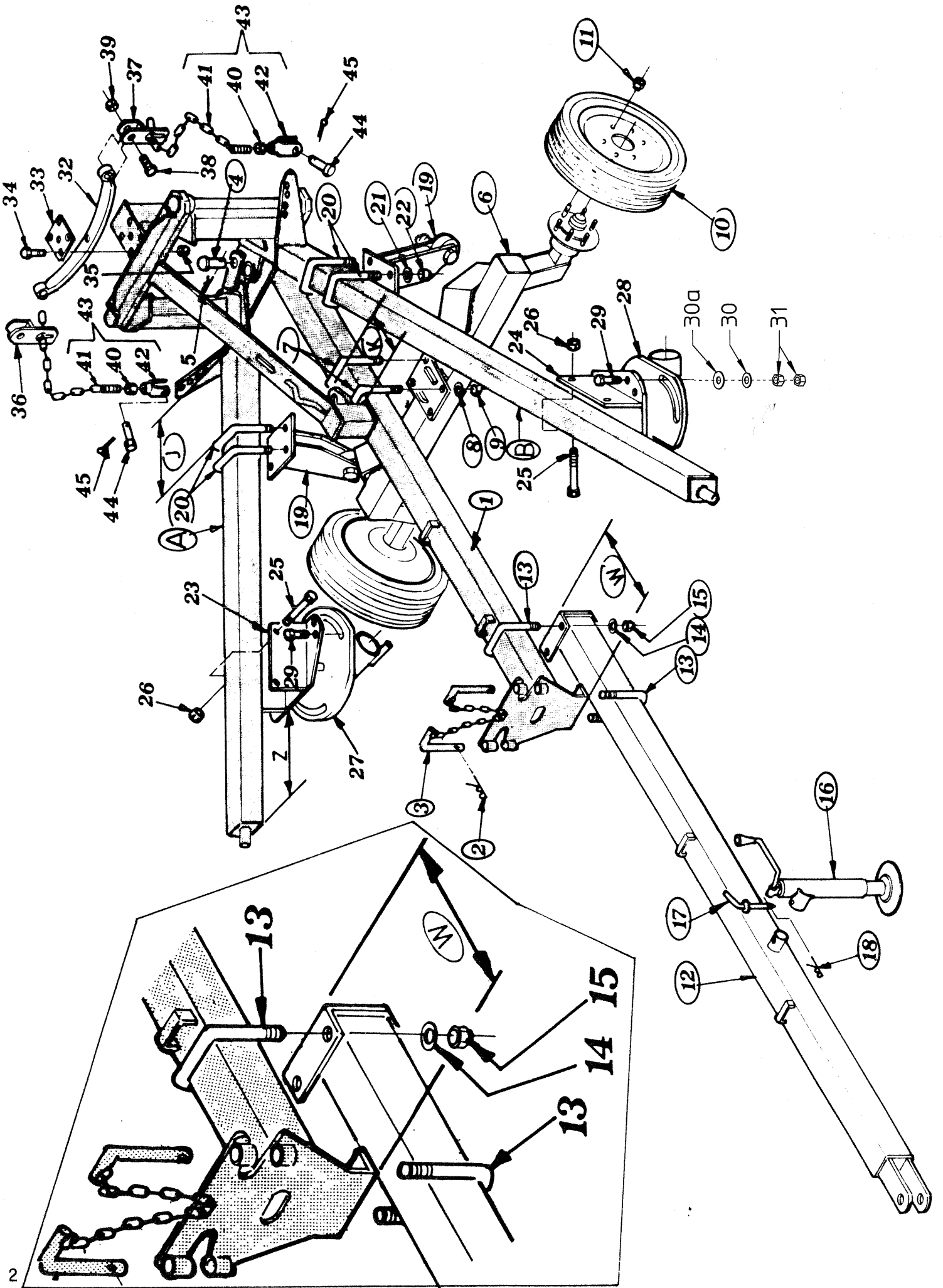
AGRICULTURAL MACHINERY

**sitrex**®

**ASSEMBLING USE AND  
MAINTENANCE  
SPARE PARTS LIST**



**H/94-V** 8  
10  
12



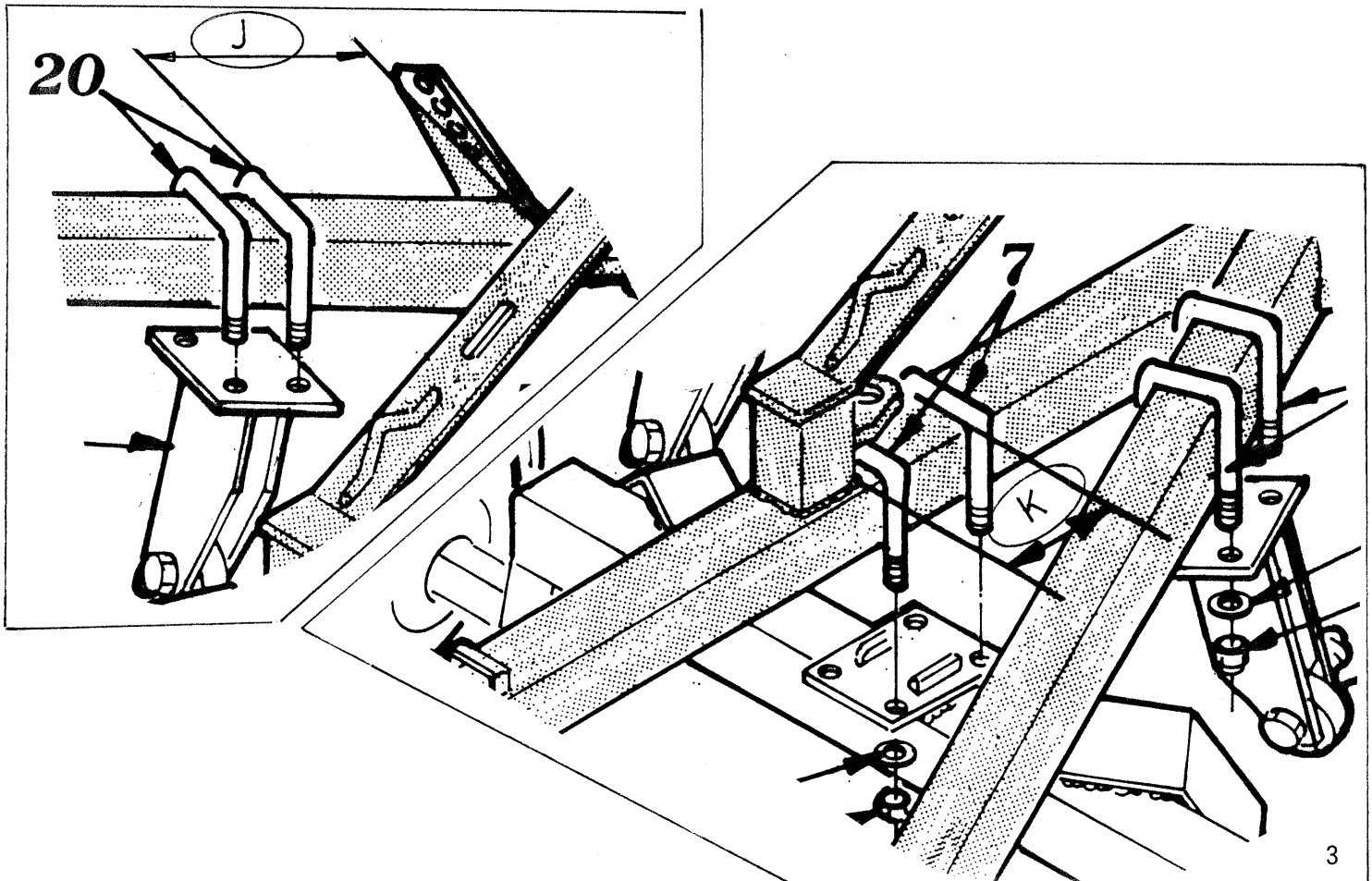
## CART H94 ASSEMBLY

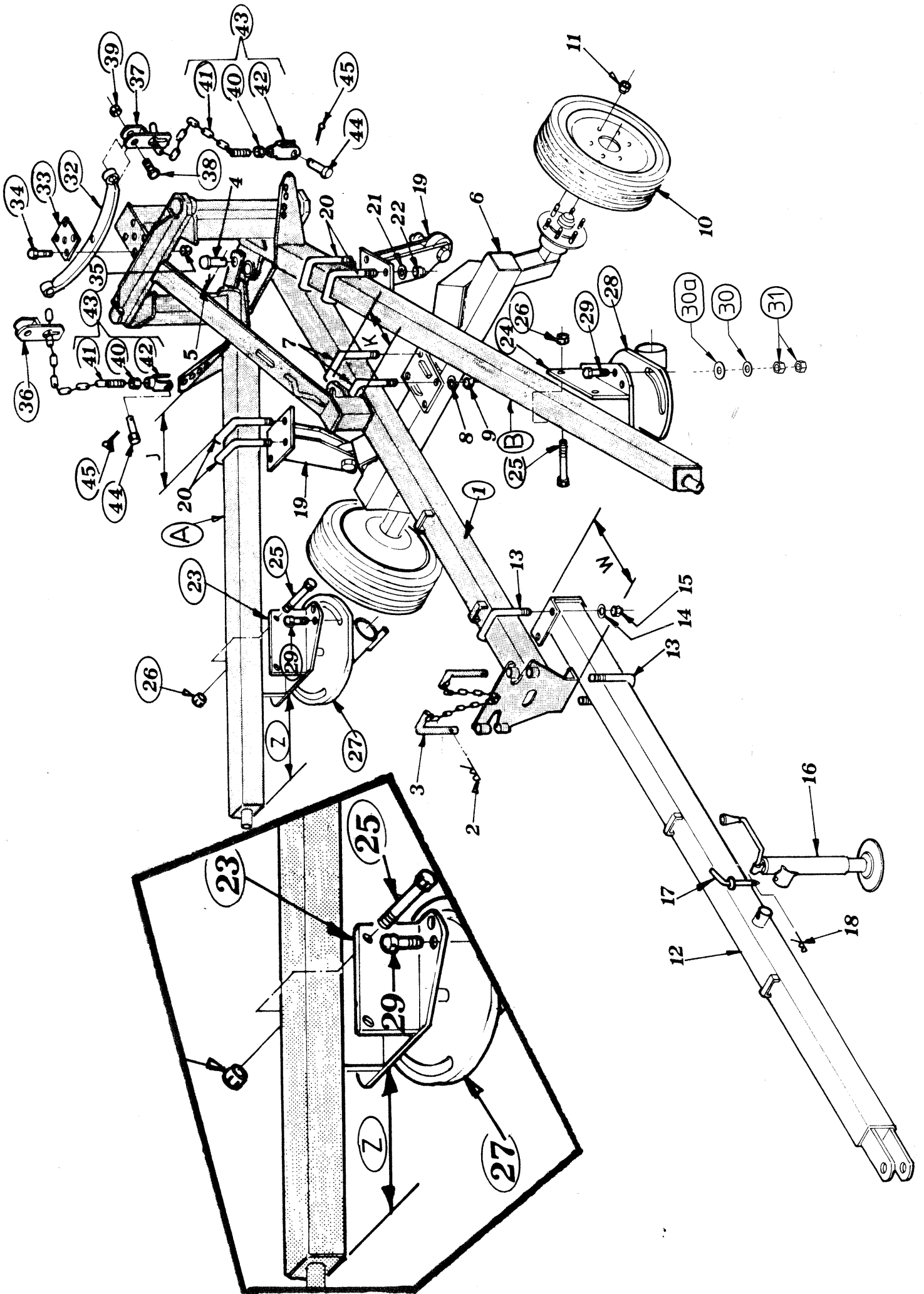
### ASSEMBLY PROCEDURE

NB: Machine frame 1 (highlighted in grey on the Plate) comes to you already assembled. Lift the frame with a suitable lifting device and start the assembly procedure.

- 1) First, remove clip 2 and pin 3 to free arms A and B of frame 1 to allow working space.
- 2) Connect arms A and B of frame 1 with pivot pin 4 and clip 5.
- 3) Now, connect axle 6 to frame 1 using U bolt 7, washer 8 and nut 9. (Position U bolt 7 at "K").
- 4) Attach wheel 10 to axle 6 hub and tighten nut 11. (NB: the rounded part of nut 11 should be assembled facing the wheel).
- 5) Attach drawbar 12 to frame 1 with U bolt 13, washer 14 and nut 15. (NB: position drawbar 12 to frame 1 at "W").
- 6) Attach stand 16 to the housing on drawbar 12 with pin 17 and clip 18.
- 7) Attach wheeled bearing 19 to arms A and B of frame 1 with U bolt 20, washer 21 and nut 22. (Position U bolt 20 at "J").

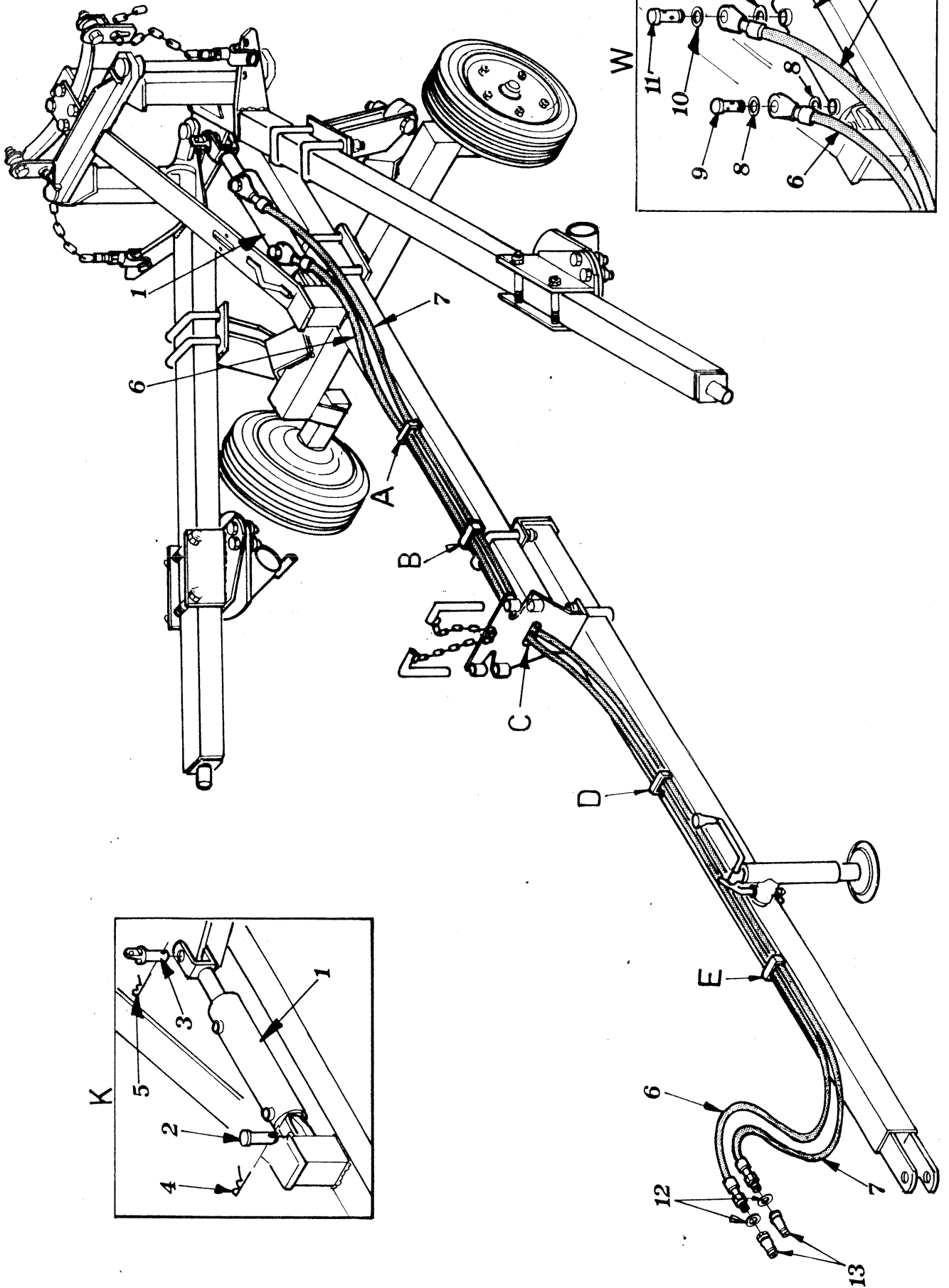
SPECIFICATIONS	H 94 - V8		H 94 - V10		H 94 - V12	
	inch	mm	inch	mm	inch	mm
K	12 3/4"	325	12 3/4"	325	12 3/4"	325
W	18"	455	18"	455	16"	400
J	6 1/2"	170	6 1/2"	170	6 1/2"	170





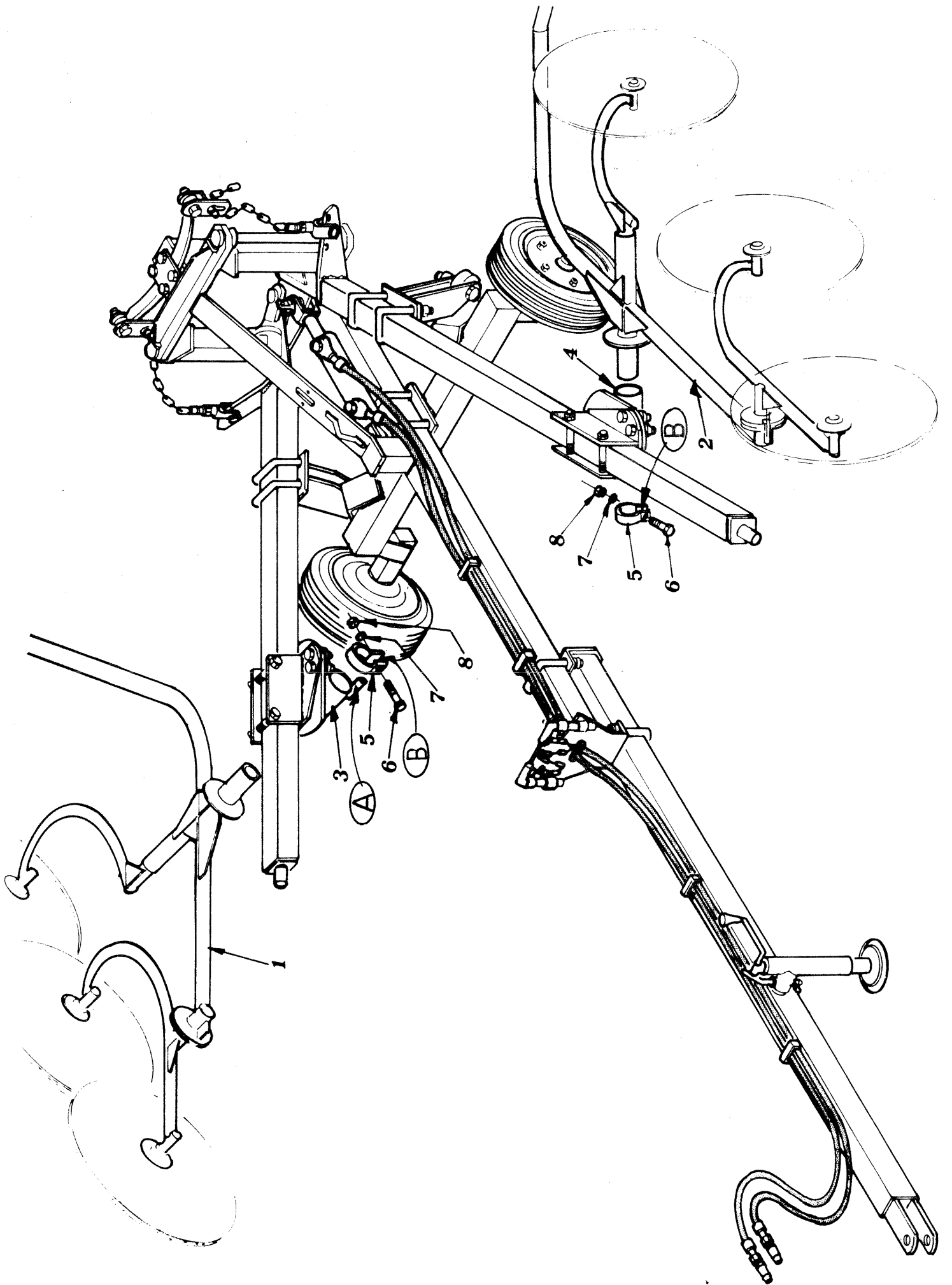
- 8) Attach permanent supports 23 and 24 to arms A and B of machine frame with bolt 25 and nut 26. (NB: position supports 23 and 24 at "Z").
- 9) Attach rotating supports 27 and 28 to the permanent supports 23 and 24, fit bolt 29, washers 30a – 30 and screw on nuts 31 (NB: Do not tighten bolt 29 as it must be tightened when the hay rake is assembled and in a working position):
- 10) Assemble leaf-spring 32 to frame 1 with counterplate 33, bolt 34 and nut 35.
- 11) Attach connections 36 and 37 to leaf-spring 32 with bolt 38 and nut 39.
- 12) Fit nut 40 to chain 41 and then to fork 42 and subsequently to chain 41. Tighten nut 40 onto fork 42.
- 13) Attach connecting rod fork 43 to correct connections on arms A and B with pin 44 and clip 45. (NB: the hole chosen to connect connecting rod fork 43 must be carried out following the notes on page .12...)
- 14) Insert connecting rod 43 into the hole of connections 36 and 37.

SPECIFICATIONS	H 94 - V8		H 94 - V10		H 94 - V12	
	inch	mm	inch	mm	inch	mm
<b>Z</b>	31 3/8"	795	28 1/2"	725	22 3/4"	580



## HYDRAULIC KIT ASSEMBLY

- 1) Fit cylinder 1 into the correct spaces with pins 2 and 3 and clips 4 and 5. (See Detail K).
- 2) Assemble water pipe 6 (the shorter one) onto the posterior connection of cylinder 1 with washers 8 and the screw-on pipe fitting 9. (See Detail W).
- 3) Assemble water pipe 7 (the longer one) onto the front connection of cylinder 1 with washer 10 and screw-on pipe fitting 11. (See Detail W)
- 4) Pass the water pipes through fixtures A,B,C,D and E.
- 5) Fit washer 12 and snap-on connections 13 to male connections 6 and 7 of the water pipe.

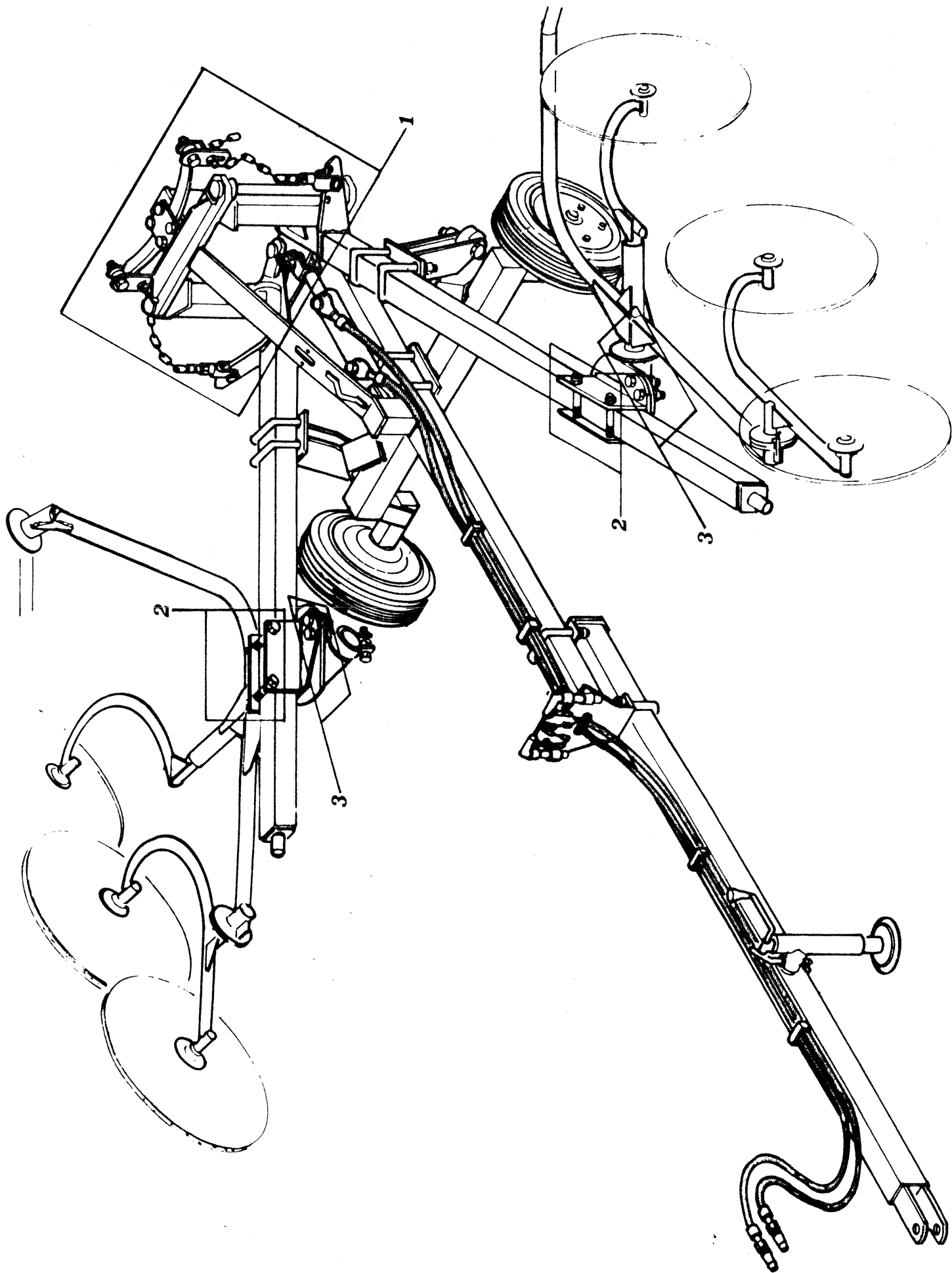




## **ASSEMBLY OF THE HAY RAKE TO THE CART**

- 1) Attach hay rakes 1 and 2 to connections 3 and 4 for correct assembly.
- 2) Fit hay rakes 1 and 2 to the connections 3 and 4 with collar 5, bolt 6, washer 7 and nut 8.

NB: Pin A of connections 3 and 4 has to be fitted into the corresponding part B of collar 5.



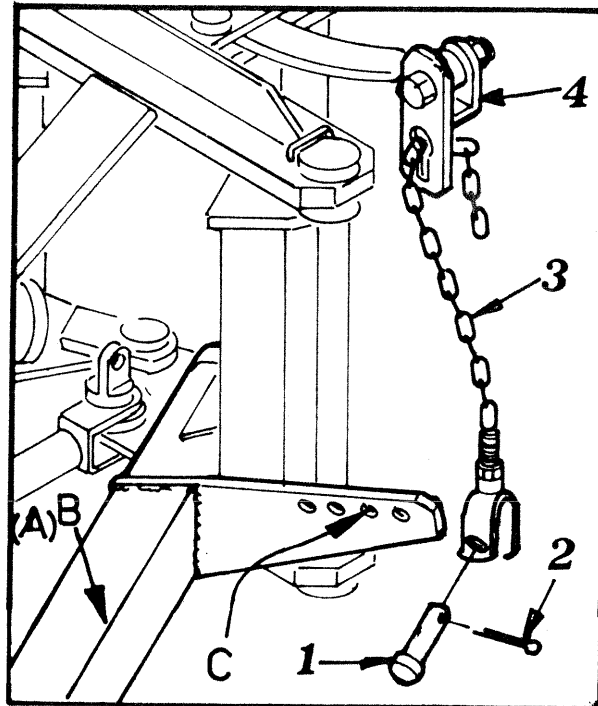
## **ADJUSTMENTS FOR MACHINE USE**

The machine must be adjusted for varying working conditions. Possible adjustments for your specific working situations are explained below.

We can schematically present three adjustment groups. These are:

- 1) Pressure and incline adjustments of the rake tines in the earth.
- 2) Adjustment of the hay rake stands according to the type of hay rake.
- 3) Working angle adjustment.

## ADJUSTMENT OF GROUP 1

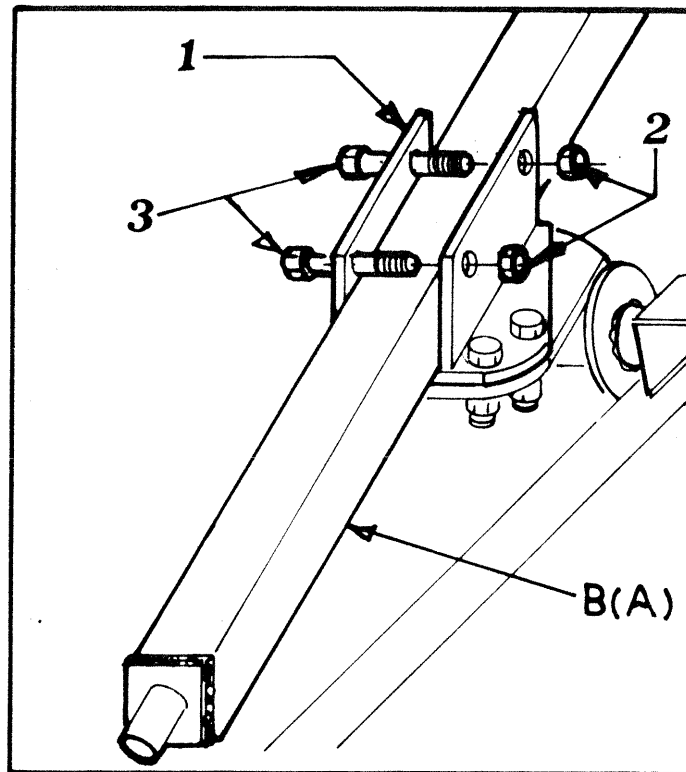


Normally , the fork of tierod 3 locks into hole C of the lever bars A-B by means of pin 1 and split pin 2.

The chain end of tierod 3 is fixed in slot of support 4. Normally , four or five chain links are left clear.

Note : this adjustment regulates the pressure of the rake wheels on the ground so that the user can make different choices than those described , following his working requirements.

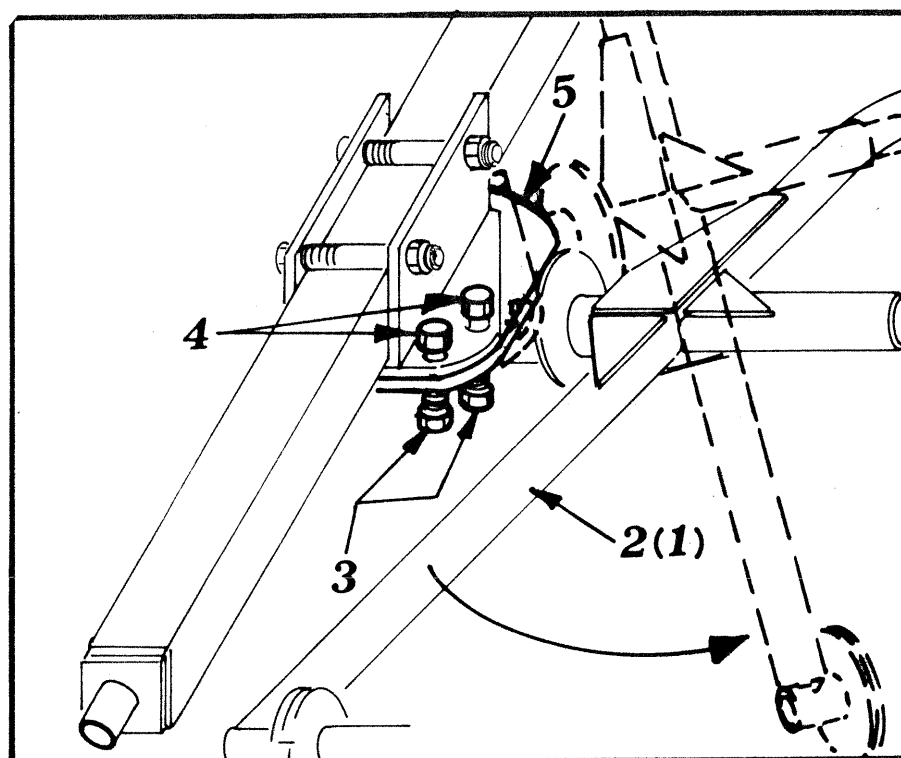
## ADJUSTMENT OF GROUP 2



The supports 1 and 2 fitted to arms A and B must be positioned satisfactorily for the prevailing working conditions. (See page 4-5.)

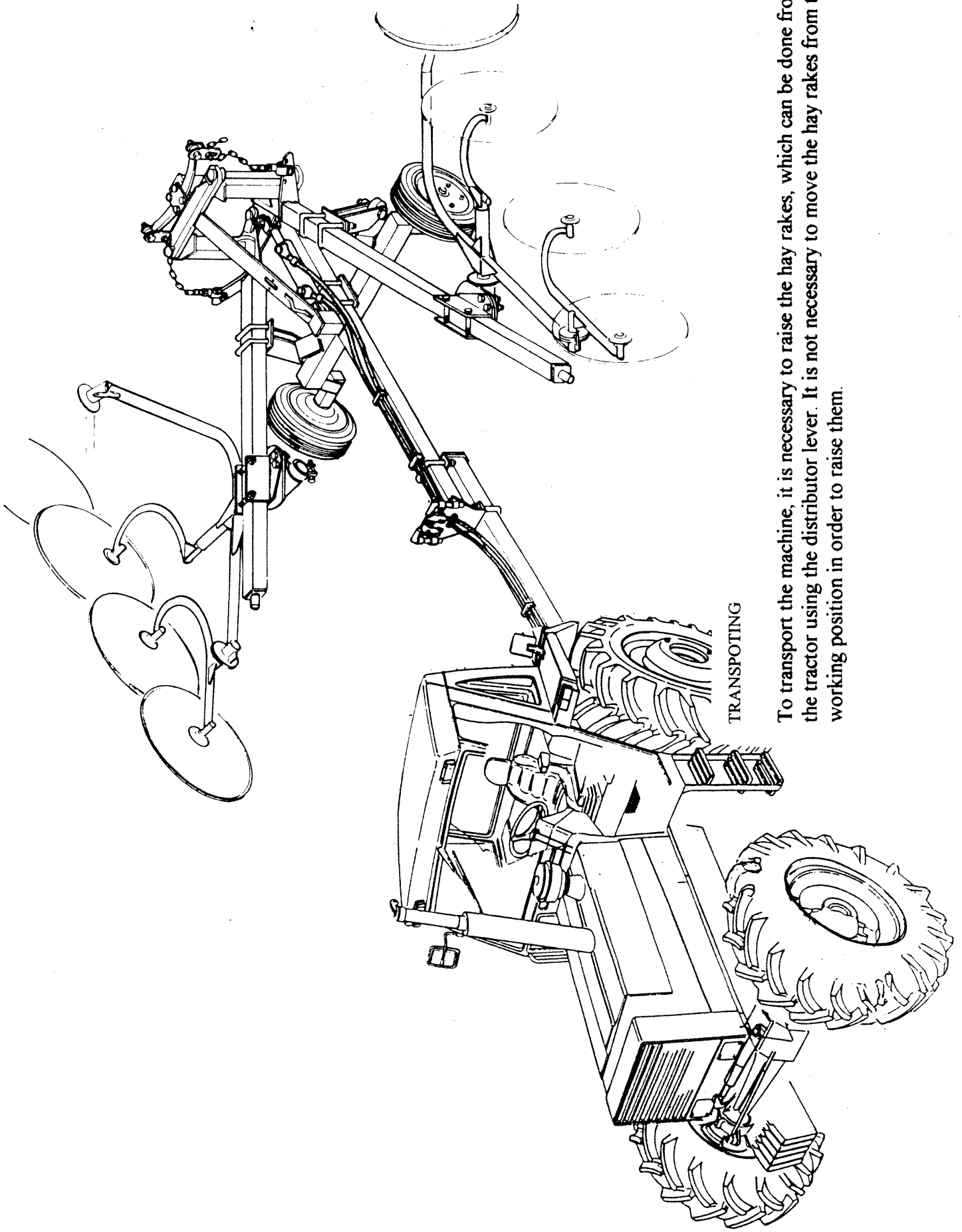
To move support 1 to the correct position loosen nut 2 thereby freeing bolt 3 which fixes support 1 to arms A and B. Then slide support 1 into the correct position .  
Now, tighten bolts and nuts 3 and 4.

### ADJUSTMENT OF GROUP 3



To operate efficiently hay rakes 1 and 2 must have a correct working incline.

To adjust the incline loosen nut 3 thereby freeing bolt 4 which fix rotating support 5. Put hay rakes 1 and 2 in the desired position and finally tighten all the nuts and bolts 3 and 4.

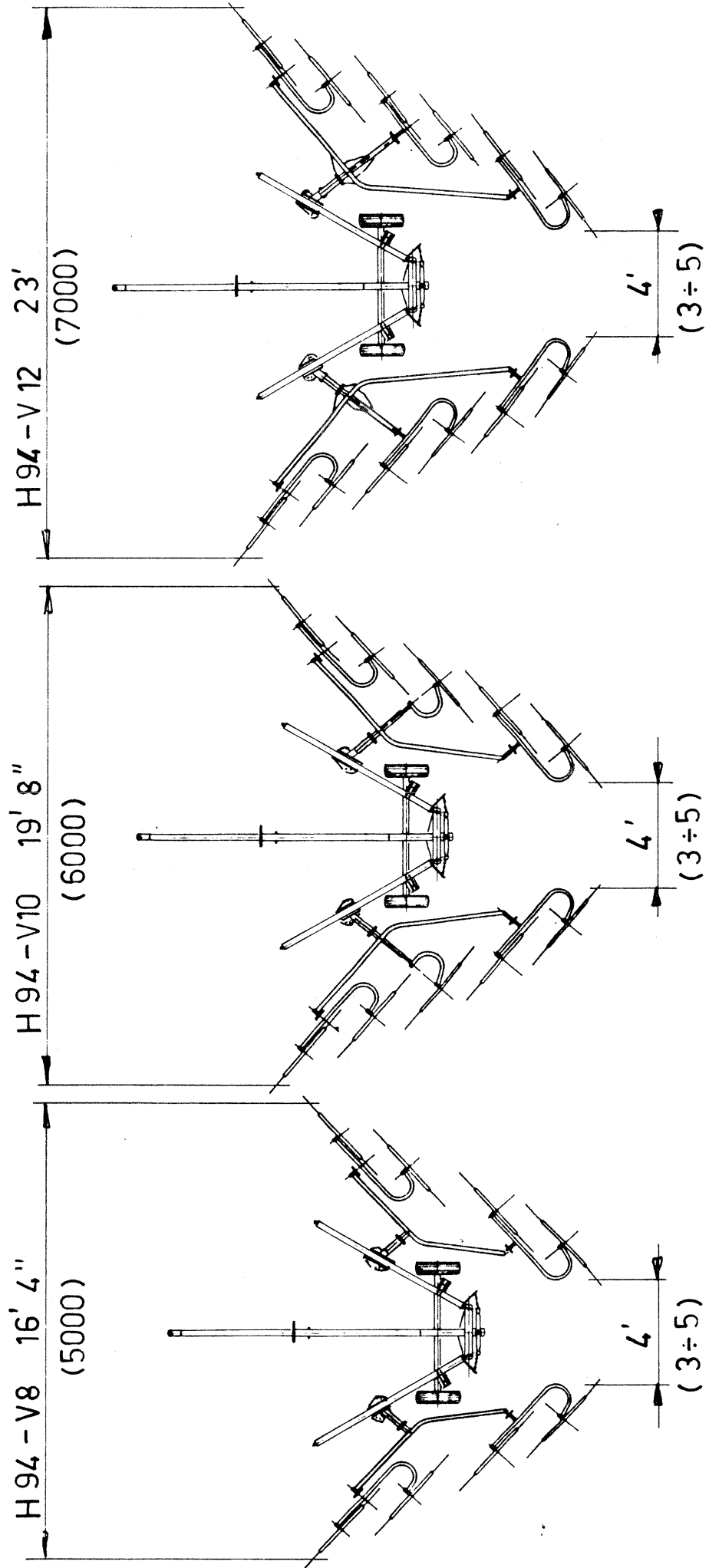


TRANSPORTING

To transport the machine, it is necessary to raise the hay rakes, which can be done from the tractor using the distributor lever. It is not necessary to move the hay rakes from the working position in order to raise them.

WE ARE GIVING ADVISABLE WORKING WIDTH MEASURES.

TO OBTAIN WORKING WIDTHS DIFFERENT FROM THE ONES  
GIVEN SEE POINT 3 PAGE 14.





# ***SPARE PARTS LIST***

TABLE NO. 920.004

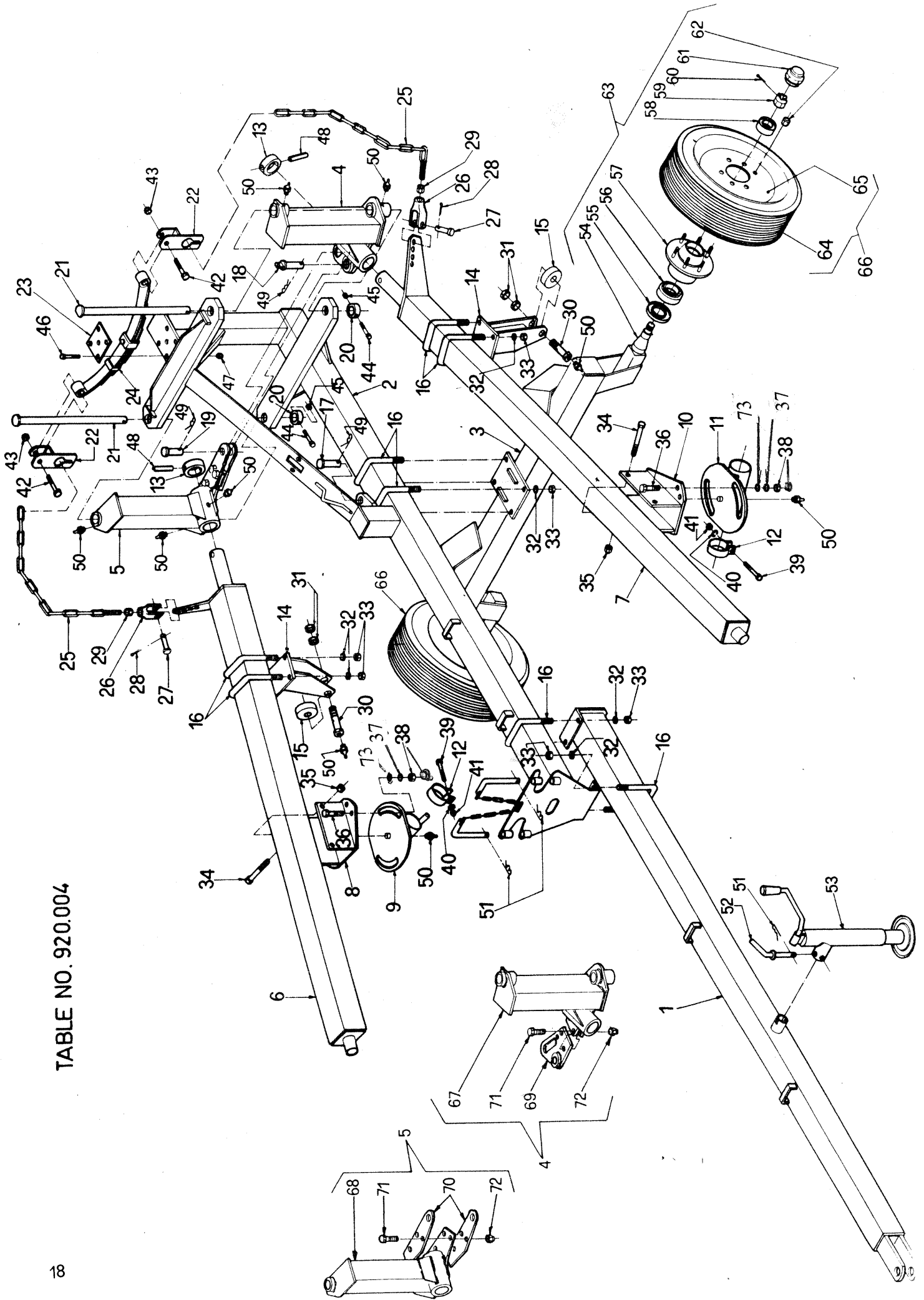


TABLE PART NO 920.004

ITEM	Q.ty	PART NO	DESCRIPTION	37	8	600.031	WASHER
1	1	200.710	DRAWBAR	38	16	600.146	NUT
2	1	200.706	FRAME	39	2	600.390	SCREW
3	1	200.707	AXLE	40	2	600.089	WASHER
4	1	200.711	L.H. SUPPORT	41	2	600.077	NUT
5	1	200.712	R.H. SUPPORT	42	2	600.737	SCREW
6	1	200.708	R.H. BAR	43	2	600.075	NUT
7	1	200.709	L.H. BAR	44	2	600.734	SCREW
8	1	200.745	R.H. SUPPORT, FIXED	45	2	600.076	NUT
9	1	200.746	R.H. SUPPORT, MOBILE	46	4	600.528	SCREW
10	1	200.703	L.H. SUPPORT, FIXED	47	4	600.029	NUT
11	1	200.704	L.H. SUPPORT, MOBILE	48	2	600.033	SPRING PIN
12	2	200.696	COLLAR	49	3	600.308	SPLIT PIN
13	2	200.699	BUSHING	50	10	600.124	GREASE NIPPLE
14	2	200.698	SUPPORT	51	3	600.019	SPLIT PIN
15	2	200.695	ROLLER	52	1	200.222	PIN
16	8	200.694	BRIDGE	53	1	200.203	PARKING STAND
17	1	200.701	PIN	54	2	205.276	HUB PIN
18	1	200.723	PIN	55	2	600.284	DUST COVER
19	1	200.702	PIN	56	2	600.285	BEARING
20	2	200.700	BUSHING	57	2	600.286	HUB BODY
21	2	200.714	PIN	58	2	600.287	BEARING
22	2	200.713	BRACKET	59	2	600.288	NUT
23	1	200.717	COUNTERPLATE	60	2	600.291	SPLIT PIN
24	1	200.692/a	LEAF SPRING	61	2	600.290	CAP
25	2	200.716	TIE-ROD	62	10	600.289	NUT
26	2	200.718	FORK	63	2	205.213	HUB ASSY
27	2	200.719	PIN	64	2	610.291	COVER
28	2	200.743	SPLIT PIN	65	2	610.290	RIM
29	2	600.009	NUT	66	2	610.270	TIRE ASSY
30	2	200.697	PIN	67	1	210.665	LH SUPPORT
31	4	600.758	NUT	68	1	210.666	RH SUPPORT
32	16	600.180	SPRING WASHER	69	1	210.667	SUPPORT
33	16	600.032	NUT	70	2	205.863/a	SUPPORT
34	4	600.595	SCREW	71	6	600.176	SCREW
35	4	600.080	NUT	72	6	600.080	NUT
36	8	610.706	SCREW	73	8	230.155	WASHER

TABLE NO. 920.101

# RP/4 RAKE

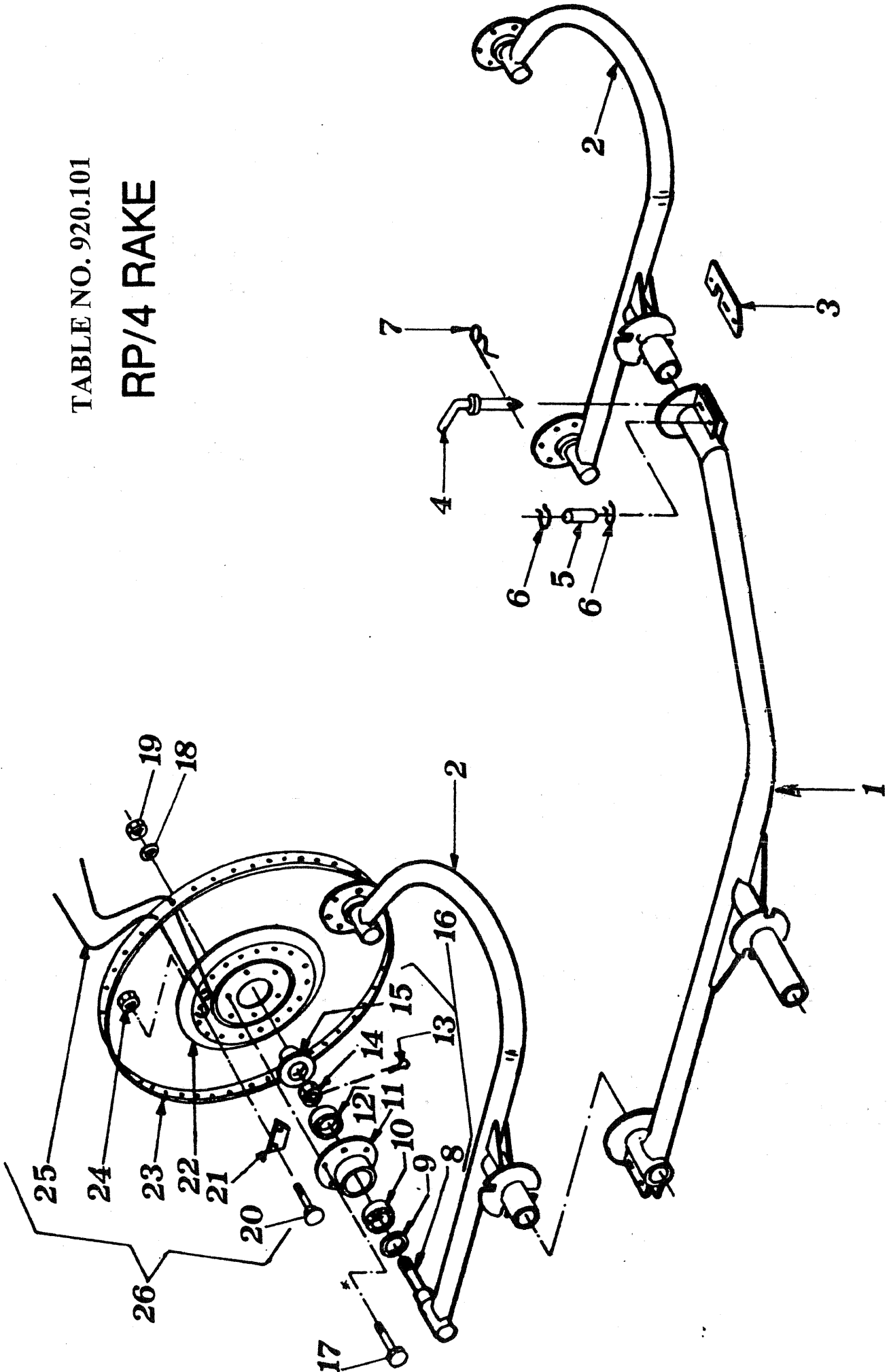


TABLE NO.920.101				
RP/4				
ITEM	Q.ty	PART NO	DESCRIPTION	NOTE
1	1	210.571	MAIN PIPE	
2	2	200.077	WHEEL ARM,RH	
2	2	200.078	WHEEL ARM,LH	
3	2	200.073	LEVER	
4	2	200.075	PIN	
5	2	200.074	PIN	
6	4	600.023	SNAP RING	
7	2	600.019	SPLIT PIN	
8	4	205.277	PIN	
9	4	600.011	DUST COVER	
10	4	600.012	BEARING	
11	4	600.013	WHEEL HUB	
12	4	600.014	BEARING	
13	4	600.301	SPLIT PIN	
14	4	600.015	NUT	
15	4	600.016	CAP	
16	4	205.041	HUB ASSY	
17	24	600.006	SCREW	
18	24	600.024	WASHER	
18	24	600.010	NUT	
20	80	600005	SCREW	
21	40	200.012	TINE CLAMP	
22	4	200010	FLANGE	
23	4	200.009	RIM	
24	80	600.029	NUT	
25	160	210.620	TINE	DIA 0,256" (6,5 mm)
25	160	210.621	TINE	DIA 0,276" (7 mm)
26	4	210.180	WHEEL ASSY,RH (TINE DIA 0,276")	
26	4	210.181	WHEEL ASSY,LH (TINE DIA 0,276")	
26	4	210.182	WHEEL ASSY,RH (TINE DIA 0,256")	
26	4	210.183	WHEEL ASSY,LH (TINE DIA 0,256")	

TABLE NO. 920.106

# RP/5 RAKE

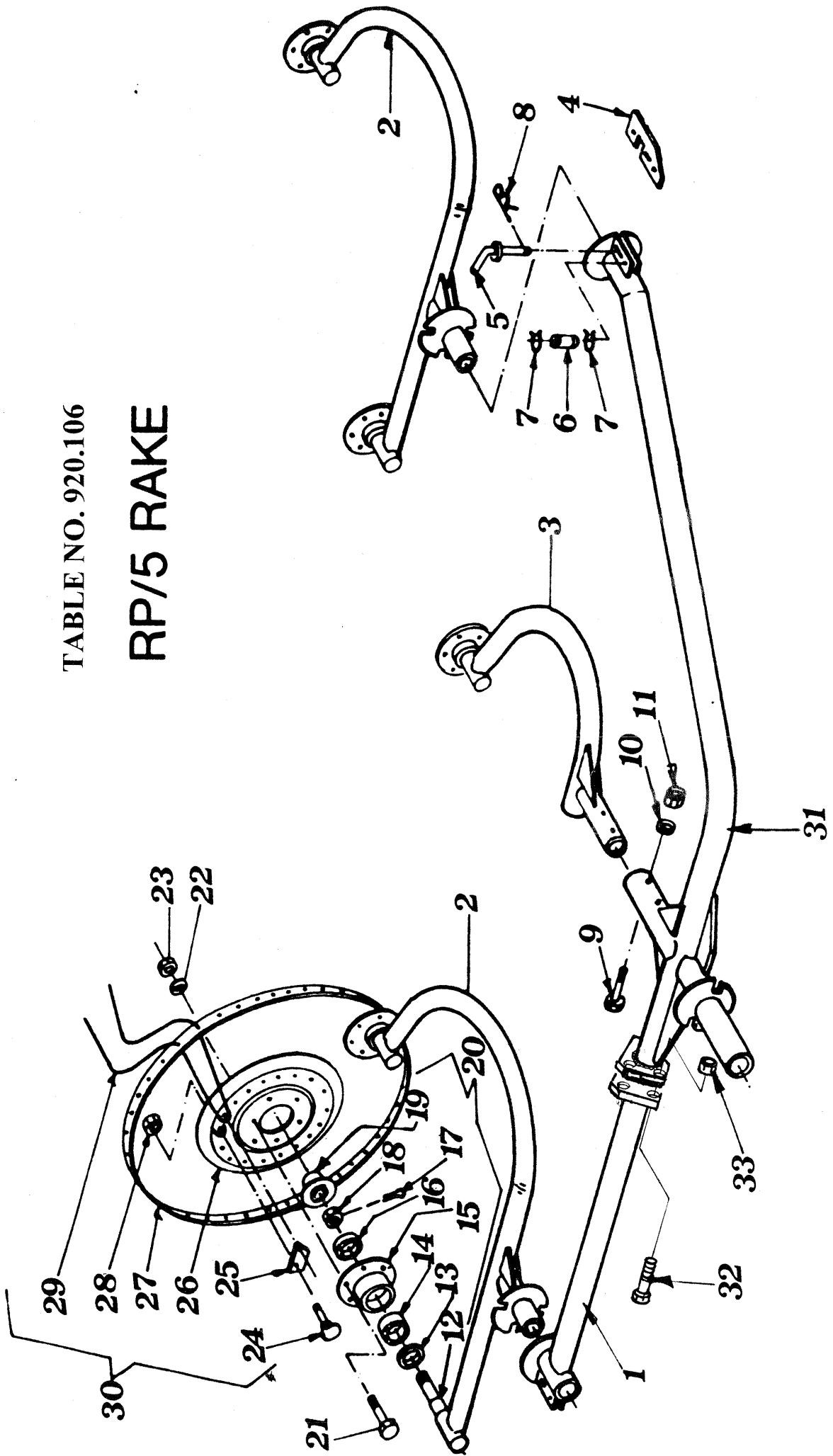


TABLE NO.920.106				
RP/5				
ITEM	Q.ty	PART NO	DESCRIPTION	NOTE
1	1	210.198	PIPE	
2	2	200.077	WHEEL ARM,RH	
2	2	200.078	WHEEL ARM,LH	
3	1	200.079	WHEEL ARM,RH	
3	1	200.080	WHEEL ARM,LH	
4	2	200.073	LEVER	
5	2	200.075	PIN	
6	2	200.074	PIN	
7	4	600.023	SNAP RING	
8	2	600.019	SPLIT PIN	
9	1	600.007	SCREW	
10	1	600.018	WASHER	
11	1	600.052	NUT	
12	5	205.277	PIN	
13	5	600.011	DUST COVER	
14	5	600.012	BEARING	
15	5	600.013	WHEEL HUB	
16	5	600.014	BEARING	
17	5	600.301	SPLIT PIN	
18	5	600.015	NUT	
19	5	600.016	CAP	
20	5	205.041	HUB ASSY	
21	30	600.006	SCREW	
22	30	600.024	WASHER	
23	30	600.010	NUT	
24	100	600005	SCREW	
25	50	200.012	TINE CLAMP	
26	5	200010	FLANGE	
27	5	200.009	RIM	
28	100	600.029	NUT	
29	200	210.620	TINE	DIA 0,256" (6,5 mm)
29	200	210.621	TINE	DIA 0,276" (7 mm)
30	5	210.180	WHEEL ASSY,RH (TINE DIA 0,276")	
30	5	210.181	WHEEL ASSY,LH (TINE DIA 0,276")	
30	5	210.182	WHEEL ASSY,RH (TINE DIA 0,256")	
30	5	210.183	WHEEL ASSY,LH (TINE DIA 0,256")	
31	1	210.199	PIPE	
32	3	600.310	SCREW	
33	3	600.075	NUT	

**TABLE NO.920.094**  
**RP/5**

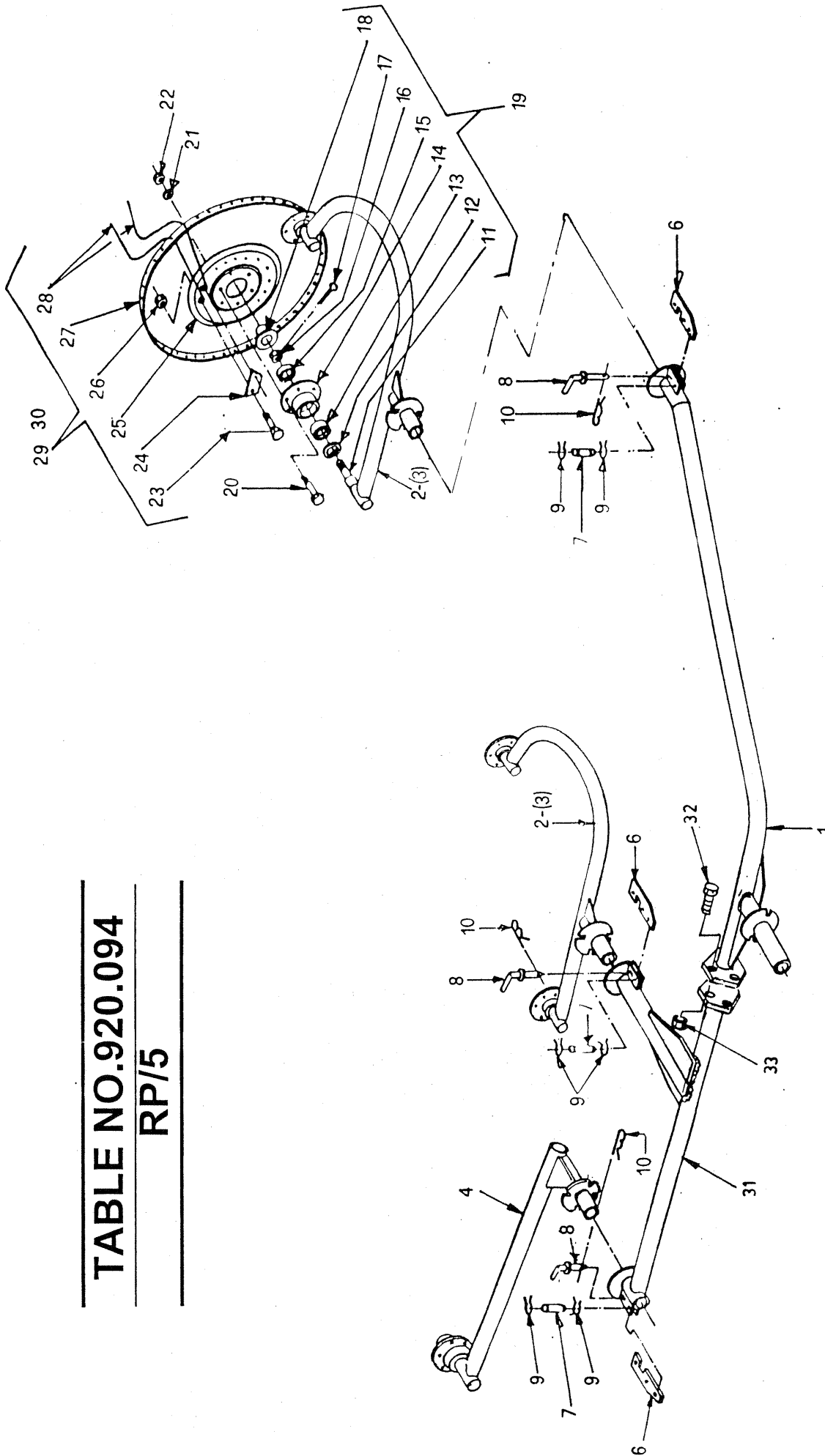




TABLE NO.920.094

RP/5				
ITEM	Q.ty	PART NO	DESCRIPTION	NOTE
1	1	210.576	MAIN PIPE	
2	2	200.077	WHEEL ARM, R.H.	
3	(2)	(200.078)	(WHEEL ARM, L.H.)	
4	1	210.067	ARM	
6	3	200.073	LEVER	
7	3	200.074	PIN	
8	3	200.075	PIN	
9	6	600.023	SNAP RING	
10	3	600.019	SPLIT PIN	
11	5	205.277	PIN	
12	5	600.011	DUST COVER	
13	5	600.012	BEARING	
14	5	600.013	WHEEL HUB	
15	5	600.014	BEARING	
16	5	600.015	SELF-LOCKING NUT	
17	5	600.301	SPLIT PIN	
18	5	600.016	SAFETY CAP	
19	5	205.041	HUB ASSY.	
20	30	600.006	SCREW	
21	30	600.024	SPRING WASHER	
22	30	600.010	NUT	
23	100	600.005	SCREW	
24	50	200.012	TINE CLAMP	
25	5	200.010	FLANGE	
26	100	600.029	NUT	
27	5	200.009	RIM	
28	200	210.620	TINE	DIA.0,256"(6,5mm)
28	200	210.621	TINE	DIA.0,276" (7 mm)
29	5	210.180	WHEEL ASSY, RH (TINE DIA.7 mm)	DIA.0,276" (7 mm)
29	5	210.182	WHEEL ASSY, RH(TINE DIA.6.5 mm)	DIA.0,256"(6,5mm)
30	5	210.181	WHEEL ASSY, LH (TINE DIA.7 mm)	DIA.0,276" (7 mm)
30	5	210.183	WHEEL ASSY, LH(TINE DIA.6.5 mm)	DIA.0,256"(6,5mm)
31	1	210.575	PIPE	
32	3	600.310	SCREW	
33	3	600.075	NUT	

# RP/6 RAKE

TABLE NO. 920.107

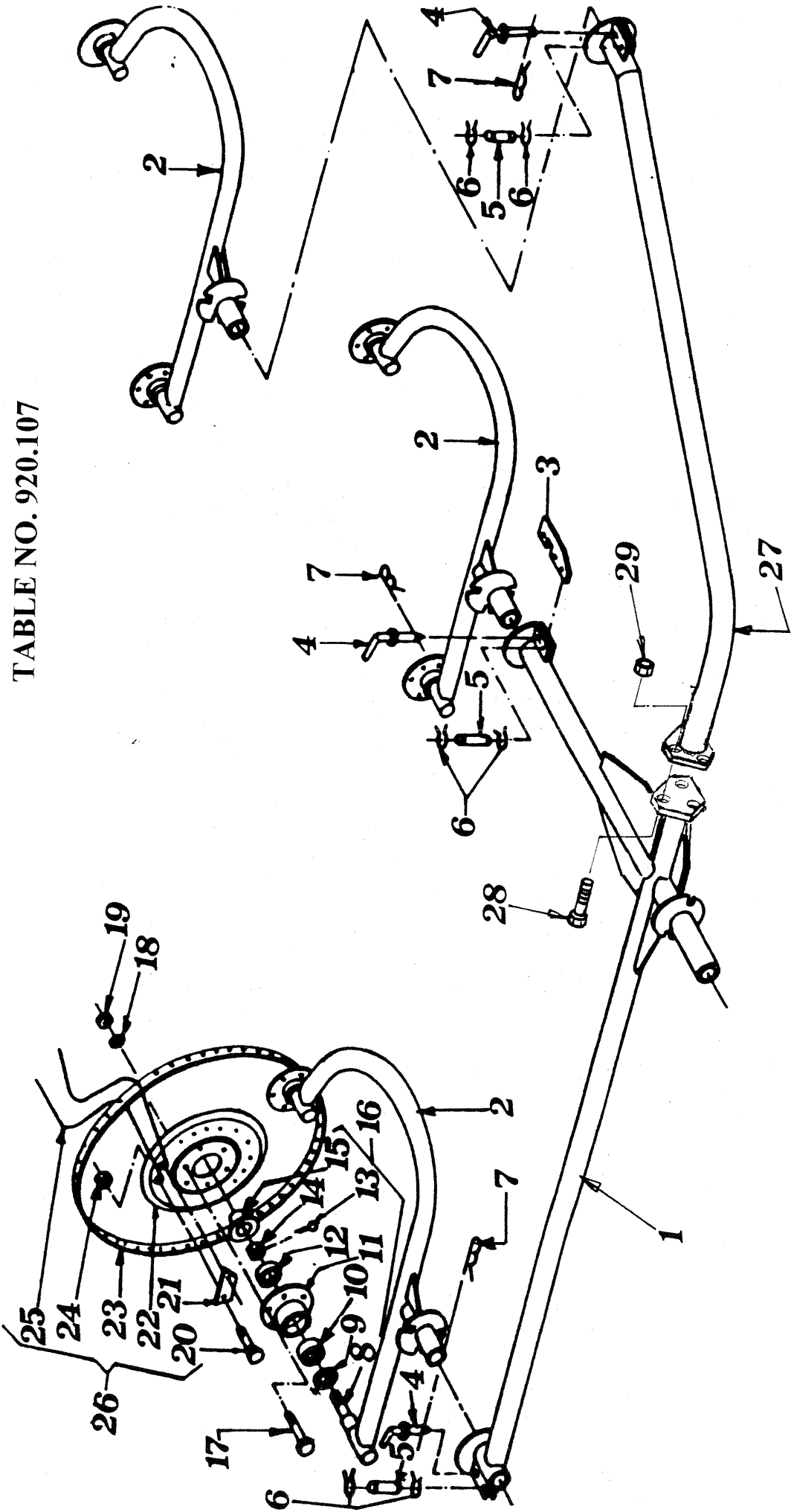
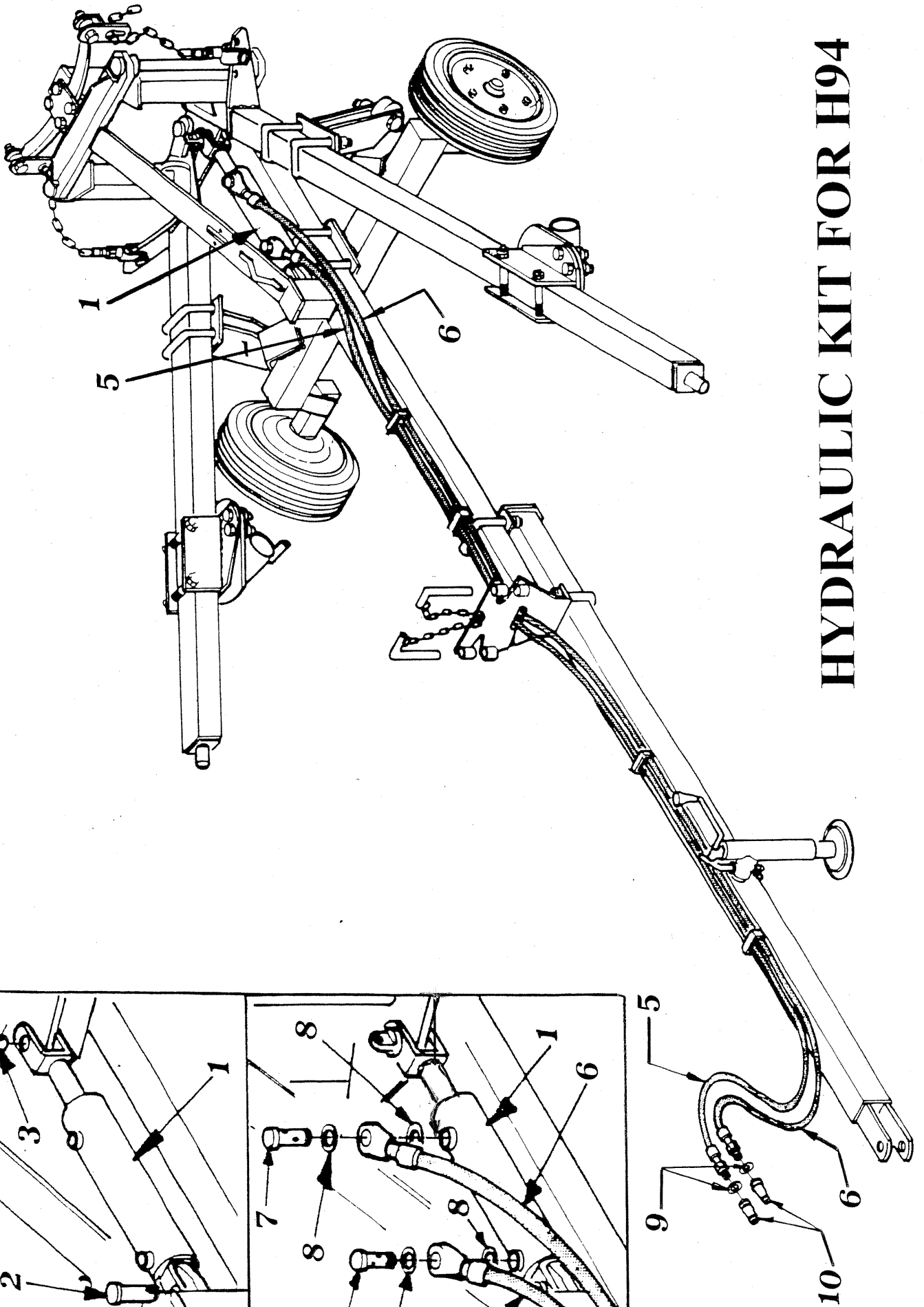
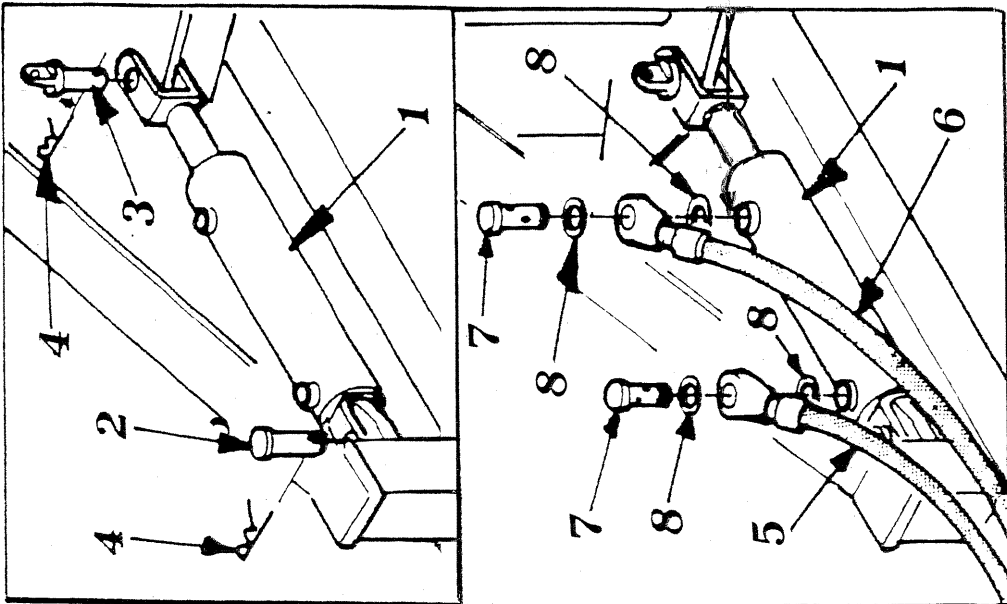
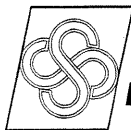


TABLE NO.920.107				
RP/6				
ITEM	Q.ty	PART NO	DESCRIPTION	NOTE
1	1	210.602	PIPE	
2	3	200.077	WHEEL ARM,RH	
2	3	200.078	WHEEL ARM,LH	
3	3	200.073	LEVER	
4	3	200.075	PIN	
5	3	200.074	PIN	
6	6	600.023	SNAP RING	
7	3	600.019	SPLIT PIN	
8	6	205.277	PIN	
9	6	600.011	DUST COVER	
10	6	600.012	BEARING	
11	6	600.013	WHEEL HUB	
12	6	600.014	BEARING	
13	6	600.301	SPLIT PIN	
14	6	600.015	NUT	
15	6	600.016	CAP	
16	6	205.041	HUB ASSY	
17	36	600.006	SCREW	
18	36	600.024	WASHER	
18	36	600.010	NUT	
20	120	600005	SCREW	
21	60	200.012	TINE CLAMP	
22	6	200010	FLANGE	
23	6	200.009	RIM	
24	120	600.029	NUT	
25	240	210.620	TINE	DIA 0,256" (6,5 mm)
25	240	210.621	TINE	DIA 0,276" (7 mm)
26	6	210.180	WHEEL ASSY,RH (TINE DIA 0,276")	
26	6	210.181	WHEEL ASSY,LH (TINE DIA 0,276")	
26	6	210.182	WHEEL ASSY,RH (TINE DIA 0,256")	
26	6	210.183	WHEEL ASSY,LH (TINE DIA 0,256")	
27	1	210.601	PIPE	
28	3	600.310	SCREW	
29	3	600.075	NUT	



# HYDRAULIC KIT FOR H94





**sitrex**<sup>®</sup>

AGRICULTURAL MACHINERY

Zona Industriale-Viale Grecia, 8  
06018 TRESTINA-(Perugia)-ITALY  
Tel. +39.075.8540021-Telefax +39.075.8540523  
e-mail: [sitrex@sitrex.it](mailto:sitrex@sitrex.it) [www.sitrex.com](http://www.sitrex.com)

